

# The Pinner Park Post



Volume 1 | Issue 16 | Friday 17 January 2020

## Kindness is Cool at School!

When we give out our special certificates during our Friday assembly, it is no surprise that they are often to children who have shown kindness to others. Children at Pinner Park are kind and helpful, and kindness is one of our key values as a school.

We are always struck by the number of children who go out of their way to be kind and helpful to others – to their friends, class colleagues, and members of staff or family members.

We especially encourage children to be ‘unexpectedly kind’ – simply thanking someone for what they do, passing on a kind thought, or helping someone when they least expect it!

We hope you have a super weekend!

Best wishes,

Headteacher



## Year 2 and Year 6 Parent Briefings



Thank you to the Year 6 parents who attended our briefing this week. The presentation slides and further information can be found on our school website.

Our Year 2 meeting is next week. We want to tell you all about the teacher assessments which take place next term. We will let you know all about the types of assessment, how we will prepare your children, and how you can help at home.

The briefing meeting for Year 2 parents is on Tuesday 21 January, 2.30pm



**Please leave the disabled parking area outside school for blue badge holders only.**

## Can you help us with some resources?

---

A reminder that we are on the lookout for the following items to enhance our outdoor play:

- Pots, pans, wooden spoons, large kitchen utensils (any kitchen items)
- Small play resources - dinosaurs, dolls, figures, cars
- Lego
- Wellies
- Fabric/ material e.g. old duvet covers, sheets, saris, curtains, net curtains, throws, rugs, carpet, seat cushions, tarpaulin, nets
- Dressing up clothes

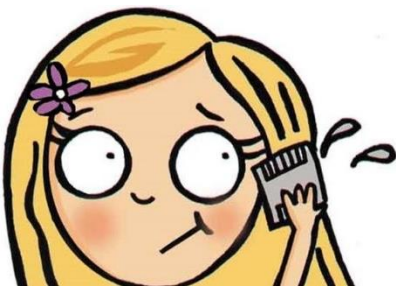


We will be happy to receive these items over the next two weeks. The sooner we do this, the sooner the children will be able to play with the items!

Thank you for your support with this.

## Unwelcome Guests – Head Lice

---



Head lice and 'nits' are a common problem wherever there are lots of children in one place and Pinner Park Primary School is no exception. Head lice are tiny insects that live in hair. 'Nits' are the empty egg cases attached to hair that head lice hatch from. They're largely harmless, but can live in the hair for a long time if not treated and can be irritating and frustrating to deal with and spread very easily from head to head contact.

Headlice is a problem that affects all of us. A common misconception is that they are a symptom of poor hair hygiene - rest assured this is not true. Lice are equally likely to be found on clean or dirty hair! At any one time, most schools will have a few children with active living head lice. Contrary to popular belief, there are rarely 'outbreaks' – just a constant and persistent issue!

There is a lot of advice regarding head lice and it is important that you follow the instructions of your pharmacy for any products that you may use. However, the following general advice may be useful for you:

- If you find head lice or 'nits' it needs to be treated quickly and effectively. Contact your pharmacy if you want further advice for recommended products.
- You don't need to keep your child off school.
- Check TWICE WEEKLY, or more often, even if clear of head lice (the sooner they are found the better!)
- It is recommended and easier to check with wet hair, using conditioner and a fine-toothed 'nit' comb.
- Tie up and plait long hair whilst at school.

The following link on the NHS website provides further information: <https://www.nhs.uk/conditions/head-lice-and-nits>

Many thanks for your continued support in this matter.

## Club Cancelled?

---



We have a wide range of after school clubs which operate every day after school. If it is raining we often get many, many telephone calls at the end of the day asking if the club is still operating.

Please note that we will always contact you if a club is cancelled. So, if you have not heard... it is on! You do not need to contact us to find out, we will always let you know. We'll always try and keep a club running, even if the weather is poor, by using alternative accommodation.

Please resist the temptation to ring the school to check as this ties up members of staff and phone lines, limiting our capacity to deal with other callers and visitors. Thanks for your support with this.

## Change of Collection Arrangements?

---

We know that, from time to time, you need to let us know that someone else will be collecting your child. Often these messages are sent very late in the day and it can be difficult to get the message to your child's class teacher before the children are dismissed, especially as we have many such messages!

If you know that there will be a change of arrangements, please let your child's class teacher know in advance, or make contact through the school office before 2pm on the day. This gives us sufficient time to ensure that all the messages are passed on.



With 30 classes, and over 850 students, it can take a while to distribute messages! Thanks for your support.

## School Disco

---



We are looking forward to our Discos on Friday 31 January and Friday 7 February.

Lower School children will be looked after by school staff at the end of the school day. The children will be able to change into their disco clothes, have a snack (provided by parents please) then will be accompanied to the disco with all their things.

FOLLOW US ON SOCIAL MEDIA  
@PinnerParkSch



## Morning Times

---

Please note the following information about morning 'drop off'.

### Upper School

Children can arrive at school, and enter the building, at any time between 8.45am and 8.55am. We are happy to take responsibility for your child as soon as they come into school.

We've noticed that a small number of children are arriving before 8.45am (some as early as 8.30am). We don't allow unsupervised children in the playground before 8.45am because we want to keep everyone safe.



### Lower School

Children should be lined up and ready to come into class at 8.50am. Please wait with your child until the class teacher leads them to class. Please do not come onto the Year 1 playground before 8.35am because it is used by our breakfast club children before that time.

### Punctuality

We monitor late attendance each week. Children who arrive late are greatly disadvantaged because they miss starting the day with their peers and the beginning of lessons. This means that they are often unsettled and confused about tasks. Their teacher will not always be able to re-explain work in that moment. It is also very important that children establish good routines and habits in preparation for the rest of their lives. Punctuality is a life skill that they need to develop whilst they are young.

## Cycling and Scootering

---



It is lovely to see so many children cycling and scootering to school. This is a super way to have a healthy and energizing start to the school day.

We ask that children walk with their cycles or scooters once they get to school, with no riding on the school site. The school playgrounds and pathways can be very busy at the beginning and end of the school day and we don't want to have any accidents caused by congestion.

Thank you for your support with this.

## Lotions and Potions

---

Our welfare team do a wonderful job of looking after children during the school day. If your child needs medication, our welfare and admin team will be able to give advice on the process for this.

Please note that we do not allow children to bring in or use any type of over-the-counter remedy, including lip balms or cough sweets. Please ensure that your child does not bring these items into school.

Thank you for your support with this.

