

The Pinner Park Post



Volume 2 | Issue 2 | Friday 11 September 2020

Thank You

Thank you for all your support at the start of this new school year. The start of the new school year is always an exciting time for everyone and we're so pleased to be back in class and enjoying our learning. We are so impressed with the children's attitude, enthusiasm and sense of responsibility.

There is so much information to take in at the start of the school year, especially getting to grips with the 'new normal'. We are so grateful for all your support.

I would like to take this opportunity to welcome all our new staff and families to Pinner Park. We do hope that you enjoy being part of our school family.

Best wishes,

Headteacher

Happy Pinner Park Family News!



We're delighted to announce a new arrival! Mrs Lakhani, who taught in Year 5 last year, has a new addition to her family. Anya, her baby girl, was born at the very end of August.

We are sure that you will join with us in congratulating Mr and Mrs Lakhani, and welcoming Anya to the Pinner Park family. Mrs Lakhani has started her maternity leave.

Our First Whole School Assembly!

Although we can't gather together in the hall, we are still holding some 'assemblies'. Today, we had our first assembly. Each class 'tuned in' through their interactive whiteboard.

We have some certificates which are awarded each Friday in assembly. Our first recipients of the year received theirs today. Well done to them!



Social Media and 'Fake News'

Over the past week, a number of parents have raised concerns with us – they had picked up information through various WhatsApp and social media messages that there were a number of children with Covid19 at the school. This is, to coin a modern phrase, 'Fake News'!

To reassure you, we currently have no confirmed cases of Covid19. Like all schools, we are being very cautious and asking parents to keep children off if they have any of the Covid19 symptoms and to get tested. Despite this, our attendance rates remain very high – over 96% for the year so far.



We know of some schools in Harrow, and in neighbouring authorities, who have asked class or year groups to self-isolate due to very small numbers of confirmed cases.

We take our responsibility for keeping children, families and staff safe very seriously. You can read about our robust procedures elsewhere in this newsletter, and previous newsletters. It is inevitable, in such a large community, that there will be times when we ask people to self-isolate and get a test. This is one of the very many measures to limit the spread of the infection.

We ask that you avoid speculating on social media groups as this will do nothing other than heighten anxiety levels at an already challenging time and make everyone's job more difficult. If you have any questions, please do ask us.

We will continue to use our online presence (website, Twitter, Facebook and Instagram) to communicate school-wide messages. Please do 'follow' or 'like' us to keep in touch. Our social media is all under @pinnerparksch.

School staff do not have access to Classlist and are not permitted to communicate over social media, except through our official channels. Therefore, raising a question using these channels will not be helpful.

Can you help us with some paving slabs?



We are installing a new storage shed soon, for all our 'loose parts' play equipment – this is all part of our ongoing project with the team from OPAL (Outdoor Play and Learning).

If any parent has spare paving slabs which we can have to create a base for the shed, we would be most grateful. Please send an email to office@pinnerpark.harrow.sch.uk and we will contact you.

Thank you.

What to do if someone in your house has Covid Symptoms

If your child develops symptoms of COVID-19, they should remain at home for at least 10 days from the date when their symptoms appeared. Please inform the school immediately.

All other household members who remain well must stay at home and not leave the house for 14 days. The 14-day period starts from the day when the first person in the house became ill. Household members should not go to work, school or public areas and exercise should be taken within the home.

Household members staying at home for 14 days will greatly reduce the overall amount of infection the household could pass on to others in the community.

If anyone in your household has symptoms, please dial 119 or visit <https://www.gov.uk/get-coronavirus-test> to book a test as soon as possible. Once you have a test result (positive or negative), please inform the school and we will be able to advise you on the next steps

The main symptoms of coronavirus (COVID-19) are:

- **a high temperature** – this means you feel hot to touch on your chest or back (you do not need to measure your temperature)
- **a new, continuous cough** – this means coughing a lot for more than an hour, or 3 or more coughing episodes in 24 hours (if you usually have a cough, it may be worse than usual)
- **a loss or change to your sense of smell or taste** – this means you've noticed you cannot smell or taste anything, or things smell or taste different to normal

Most people with coronavirus have at least 1 of these symptoms.

Remember, if you, or any member of your household, has any of the symptoms above you must:

- stay at home (do not leave the house except to get a test)
- arrange to have a test to see if you have COVID-19
- co-operate with NHS test, track and trace
- inform the school straight away

If a child or adult develops any of these symptoms whilst in school they will be immediately isolated and sent home.



CORONAVIRUS
STAY ALERT TO
THE SYMPTOMS

FOLLOW US ON SOCIAL MEDIA
@PinnerParkSch



Parking

We have a small but significant number of drivers who need to show greater care when driving and parking close to school.

Please note the following guidelines to keep everyone safe:

- Only park in designated parking areas
- Do not park or stop on the yellow zig-zags outside school during the times when parking is restricted
- Park safely before allowing your children to leave your vehicle – please don't let them get out of the car if you are on the roadway
- Please do not block local residents' driveways (some driveways on Headstone Lane have been blocked this week)
- Only park in the blue badge holder bays (immediately outside school) if you are disabled and are displaying a badge
- Please do not turn your car on Melbourne Avenue – it is helpful if everyone approached Melbourne Avenue from Headstone Lane and then continues in the same direction
- Please do not use the staff car park for parking or turning



Please follow these simple guidelines – they are in place to keep our children and families safe.

Keeping in Touch – Year Group Email Addresses



During the lockdown we set up some year group email addresses. In our parent questionnaire, a good number of parents told us that they found these really helpful so we are going to keep them!

If you send an email to the year group email addresses, a member of staff from the year team will respond to you – this will often be your child's teacher.

The year group email addresses are particularly good for asking questions about the learning in class.

Please note that our teachers are busy teaching the class for most of the week but we have asked them to check the inbox at least weekly. Please do not use these email addresses for anything more urgent – please use the office email address.

The email addresses are:

nursery@pinnerpark.harrow.sch.uk

reception@pinnerpark.harrow.sch.uk

year1@pinnerpark.harrow.sch.uk

year2@pinnerpark.harrow.sch.uk

year3@pinnerpark.harrow.sch.uk

year4@pinnerpark.harrow.sch.uk

year5@pinnerpark.harrow.sch.uk

year6@pinnerpark.harrow.sch.uk

Please use office@pinnerpark.harrow.sch.uk for any general enquiries or urgent matters.

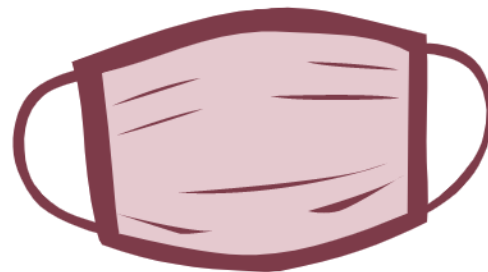
Face Coverings – Please wear one on the school site if you are able to

We are asking that any parents or visitors coming onto the school site wear a face covering. This includes the school's outdoor spaces such as our playgrounds at drop off and collection times.

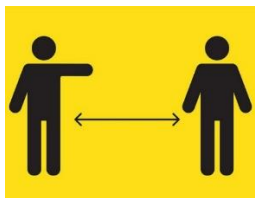
We are mindful that some parents are not able to wear a face covering – for example, those with certain health conditions.

Please do not challenge those who are not wearing a face covering. We seek to encourage, rather than 'police' this. Please always be kind. We trust that anyone who is able to wear a face covering will, as this is one simple act that we can do to help each other to be safe.

Please wear a face covering on the school site if you are able to



Keep Your Distance!



Please remember that all adults in school, including parents, will be expected to observe social distancing at all times.

This means that we want you to remain at least two metres from all those who are not part of your household.

- 2 metres is about 6'7".
- It is about the same length as a double bed.
- It is about the same as the arm span of an adult (both arms stretched out)
- It's about the same as two shopping trolleys.

When you are waiting on the playground at drop-off and collection, please try your best to find a nice, big space to stand in. Please 'send' your child to the teacher, and we will 'send' them to you at the end of the day – please don't be tempted to gather around the door. Thank you.

Staff Spotlight- Miss Butler and Miss Goodey

We have a large staff team, and many of our members of staff work behind the scenes – vital to the school, but often unseen.

This week, we want to highlight the work of Miss Butler and Miss Goodey. Since we reopened in June, both members of staff have taken on the additional role of 'all day cleaners'. Most of our cleaning happens when the children are at home, but during this time we have increased our capacity for keeping the school sanitised and clean.



Throughout the day, they are focussing on areas which are frequently touched and any shared areas. They have lost count of the number of door handles, light switches and handrails they have sanitised and cleaned! Thanks to both of them for helping keep everyone safe.

Second Hand Uniform Sale

Our wonderful PTA are holding a second hand uniform sale on Monday 21st September 2020, from 2:50pm to 4:00pm, in the Upper School Playground. Each item will be priced at £1.

Normal social distancing measures will apply so please be patient and wear a face-covering. Hand sanitiser will be available.



Uniform donations: Parents can drop off any clean, undamaged uniforms to the school on Thursday 17th September at either drop off time (between 8:30 am and 9am) or pick up time (between 3pm and 3:30pm) by the Parent Information Point in the Upper School Playground. If you are donating uniforms, please ensure that they are in clean, good, saleable condition. The donations will remain in 'quarantine' until Monday.

Important School Admissions Information

If your child is due to start in primary or secondary school in September 2021 you need apply for a school place!

Please note that the following information is for Harrow residents. If you live in another local authority, please check their website for information about how to apply.



PRIMARY SCHOOL CHILDREN BORN BETWEEN 1 SEPTEMBER 2016 AND 31 AUGUST 2017	SECONDARY SCHOOL CHILDREN BORN BETWEEN 1 SEPTEMBER 2009 AND 31 AUGUST 2010
<p>You need to apply for a reception place. Please apply:</p> <ul style="list-style-type: none">❖ Online at www.eadmissions.org.uk <p>CLOSING DATE FOR APPLICATIONS IS 15 JANUARY 2021</p>	<p>You need to apply to transfer to secondary school. Please apply:</p> <ul style="list-style-type: none">❖ Online at www.eadmissions.org.uk <p>CLOSING DATE FOR APPLICATIONS IS 31 OCTOBER 2020</p> <p>We strongly recommend that you submit your secondary application before the half term holiday.</p>
<p>APPLYING ONLINE. IS EASY AND YOU GET AN INSTANT ACKNOWLEDGEMENT THAT YOUR APPLICATION HAS BEEN RECEIVED. YOU WILL ALSO RECEIVE AN EMAIL WITH THE OUTCOME OF YOUR APPLICATION ON OFFER DAY.</p> <p>For details go to www.harrow.gov.uk/schooladmissions</p>	

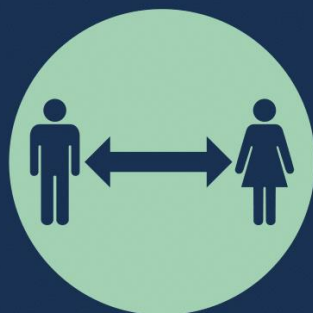
We must keep on protecting each other.



HANDS



FACE



SPACE