

# The Pinner Park Post



Volume 2 | Issue 3 | Friday 18 September 2020

## Be Kind

Children at Pinner Park are kind - and this is one of the key words which form our school behaviour code.

I am delighted to report that, each and every school day, I am struck by the number of children who go out of their way to be kind and helpful to others – to their friends, class colleagues, and members of staff.

We thought about how we can show kindness to others in our assembly today – showing kindness in school, at home, and in our local community.

Our community is enriched by kindness. We always want to answer the question, 'What is the kind thing to do?'

I am especially thankful for the way in which the children, staff and families have shown kindness during these extraordinary times.

Have a wonderful weekend!

Best wishes,

*Nick Waldron*



## Speaking to your child's teacher



We know that it is difficult for parents to speak with teachers at the moment. With our social distancing measures in place it is difficult to speak with them at the beginning and end of the school day.

We do want to respond to any queries and questions so please do use these alternatives. You can use these for passing message on, or for requesting a phonecall from your child's teacher.

- Leave a message at the outdoor 'Parent Info Point' on the Upper School playground (look for the red gazebo). This is our 'outdoor office' whilst we have limited access to the school building for visitors.
- Send an email to your child's year group email address (for non-urgent queries) or to the school office (for more urgent enquiries). You can also request a call back.

## What to do if someone in your house has Covid symptoms

If your child develops symptoms of COVID-19, they should remain at home for at least 10 days from the date when their symptoms appeared. Please inform the school immediately.

All other household members who remain well must stay at home and not leave the house for 14 days. The 14-day period starts from the day when the first person in the house became ill. Household members should not go to work, school or public areas and exercise should be taken within the home.

Household members staying at home for 14 days will greatly reduce the overall amount of infection the household could pass on to others in the community.

If anyone in your household has symptoms, please dial 119 or visit <https://www.gov.uk/get-coronavirus-test> to book a test as soon as possible. Once you have a test result (positive or negative), please inform the school and we will be able to advise you on the next steps

The main symptoms of coronavirus (COVID-19) are:

- **a high temperature** – this means you feel hot to touch on your chest or back (you do not need to measure your temperature)
- **a new, continuous cough** – this means coughing a lot for more than an hour, or 3 or more coughing episodes in 24 hours (if you usually have a cough, it may be worse than usual)
- **a loss or change to your sense of smell or taste** – this means you've noticed you cannot smell or taste anything, or things smell or taste different to normal

Most people with coronavirus have at least 1 of these symptoms.

Remember, if you, or any member of your household, has any of the symptoms above you must:

- stay at home (do not leave the house except to get a test)
- arrange to have a test to see if you have COVID-19
- co-operate with NHS test, track and trace
- inform the school straight away

If a child or adult develops any of these symptoms whilst in school they will be immediately isolated and sent home.



**CORONAVIRUS**  
**STAY ALERT TO**  
**THE SYMPTOMS**

FOLLOW US ON SOCIAL MEDIA  
@PinnerParkSch



## School Admissions

---

If your child is due to start in Reception in 2021, you can apply now, online at: [www.harrow.gov.uk/schooladmissions](http://www.harrow.gov.uk/schooladmissions) or [www.eadmissions.org.uk](http://www.eadmissions.org.uk). Your child will be starting in Reception if he or she was born between 1st September 2016 and 31st August 2017.

The closing date is 15th January 2021.



## Jewellery

---



We have noticed a few children starting to wear jewellery items to school including earrings, necklaces and bracelets.

Jewellery is unsuitable to be worn in school. It presents a hazard to the wearer and others, needs to be removed for all physical activity, and could become lost or damaged. For these reasons we would ask that no jewellery is worn in school.

We would prefer children not to wear earrings but we realise that they may need to be worn in recently pierced ears. If this is the case, only a plain stud earring should be worn (no hooped, shaped, gem or 'dangly' earrings please). Earrings will need to be removed by your child for PE lessons.

A few parents may wish their children to wear an item of jewellery for the purpose of religious observance or for medical reasons. If this is the case, we would ask that you speak with Mr Waldron or Mrs Edwards who may consider an adaptation of the rule for your child, whilst still promoting safety.

A simple watch may be worn (this must be removed for PE and physical activity) but please do not allow your child to wear expensive items or 'fitbit' style trackers.

Thank you for your support with this. We will remind children and send a note home if we spot jewellery in school.

## Parking

---

We still have a small but significant number of drivers who are parking illegally, causing great disruption to the local roads and putting our children's lives at risk.

To be clear, we do not expect to see any Pinner Park Parents parking on the yellow zig-zags outside school during the times when parking is restricted.

We have asked Harrow Council and the local police to patrol as frequently as possible to enforce this.



Additionally, there is an area outside the school which is restricted to drivers with disabilities, who display a blue badge. If other drivers park in this area, some of our parents with blue badges are unable to drop their children safely at school. Please do not park in this area unless you have a blue badge.

## Governor Note

---

### From the Governing Board

Bhumika Mehta and Rahul Sareen (Acting co-chairs of the Governing Board) write...

“Parents typically hear about the governing body when there is an election for a parent governor.

Today, we would like to congratulate the school - pupils, staff, parents and carers - for all the hard work everyone has put into getting back into school. There was 96% attendance in our first week.

Yesterday we had our first confirmed case of coronavirus among our pupils. The school has put into place the plans it developed last year and throughout the summer to minimise the risk of transmission and disruption to our children’s education. This may not be the only case we have this school year but by continuing to follow the school’s guidelines, we will reduce the risk of further interruptions.

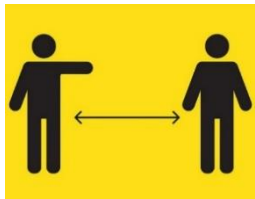
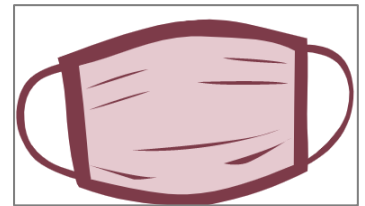
While attendance is vitally important, we would also like to thank the parents and child who fell ill for not coming to school once they suspected their symptoms, despite the disruption to their own lives. We wish a speedy recovery to the concerned child.

As governors, our role is strategic not the day to day running. We set the future vision for the school and ensure staff meet our ambition for ever improving pupils’ learning and wider development. But today, we’d like again to say thank you to the whole school community. “

## Face Coverings and Keeping our Distance!

---

We are asking that any parents or visitors coming onto the school site wear a face covering. This includes the school’s outdoor spaces such as our playgrounds at drop off and collection times. We are mindful that some parents are not able to wear a face covering – for example, those with certain health conditions.



Please remember that all adults in school, including parents, will be expected to observe social distancing at all times.

This means that we want you to remain at least two metres from all those who are not part of your household.

When you are waiting on the playground at drop-off and collection, please try your best to find a nice, big space to stand in. Please ‘send’ your child to the teacher, and we will ‘send’ them to you at the end of the day – please don’t be tempted to gather around the door. Thank you.

## Second Hand Uniform Sale

---

Our wonderful PTA are holding a second hand uniform sale on Monday 21st September 2020, from 2:50pm to 4:00pm, in the Upper School Playground. Each item will be priced at £1.

Normal social distancing measures will apply so please be patient and wear a face-covering. Hand sanitiser will be available.



## Staff Spotlight - Mr Gregori and Mr El-Alami

---

We have a large staff team, and many of our members of staff work behind the scenes – vital to the school, but often unseen.

This week, we want to highlight the work of Mr Gregori and Mr El-Alami, our site manager and assistant manager.



Mr Gregori and Mr El-Alami keep our school site secure, in good working order, and safe. They are real-life superheroes, often responding quickly to 'save the day'.

They are an amazing team and we are really fortunate to have such dedicated, skilled and hard-working site staff.

## School Crossing Patrol

---



Our school crossing patroller is not able to work at the moment and we have not been able to secure a temporary replacement through Harrow Council.

Please be very careful when crossing the road. Find a safe place to cross and speak to your children about crossing the road safely.

## School Lunch Cancellations

---

If your child is absent from school for any reason, please remember to cancel your child's school lunch through ParentPay as soon as possible (and before 8am on the meal day).



Even if your child has a free school meal, this is really important – it prevents us from wasting food and school funds (we pay for every meal ordered).

## Limited Access to School Office

---



During this time we are limiting the number of parents and visitors coming on to the school site. We have had a high number of parents coming into the office this week to drop off book bags, water bottles and packed lunches. Could we, respectfully, ask that everyone double-checks that the children have everything with them at the start of the school day so that we can manage the number of adults on the school site. Thank you.

**NURSERY PLACES AVAILABLE NOW!  
FOR THREE AND FOUR YEAR OLDS  
CONTACT OUR OFFICE TEAM FOR MORE INFORMATION**

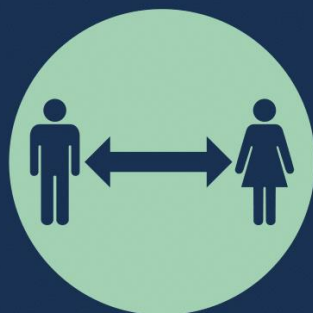
# We must keep on protecting each other.



**HANDS**



**FACE**



**SPACE**