

The Pinner Park Post



Volume 2 | Issue 5 | Friday 2 October 2020

Learning • Character • Community

Over the past year, the Governing Board has been thinking about the school's core purpose, vision and values. We've been considering what is really important to us as a newly-amalgamated primary school.

As part of this journey, we asked parents and staff to let us know what was important to them (you may remember a survey we sent out before the lockdown of schools).

After much thought, discussion and deliberation, the Governing Board has distilled the most important features into a summary document, and has also crafted some ambitious, forward-thinking principles which will shape the direction of the school over the coming years. We want to be the very best school we can be.



The summary, our foundation statement, is based around three key words which came out of the discussions across the course of the year – learning, character and community. These aspects are at the heart of Pinner Park Primary School.

Our renewed vision for Pinner Park reflects a passionate commitment to learning, recognition of the uniqueness of individual learners, understanding of the qualities - the inner resources – which enable us to be successful, and a desire to work in partnership with parents and the wider community.

We will be speaking with the children about our three key words – these will give us a common understanding of what is important to us as a school. We believe our approach will prepare them to be happy, successful and responsible citizens, both now and in the future.

On the following page of this newsletter you will find a copy of the summary document. I commend it to you. This will also be featured on our school website and throughout our communications moving forward.

I hope you have a great weekend!

Best wishes,

Nick Waldron

Headteacher

Pinner Park Primary School Foundation Statement

What's important to us – three word summary

Learning · Character · Community

What's important to us

We work together, as a school community, to empower and inspire each and every child to be an outstanding learner who enjoys learning, to develop character, and to become a respectful citizen who make a positive impact.



Our key principles

Learning

- Each child makes sustained progress as a result of outstanding, motivating and inspirational teaching.
- Learning across the entire curriculum is highly valued and each subject and area of learning is treated as significant.
- Teachers plan challenging and enjoyable tasks based on accurate assessment of pupils' prior skills, knowledge and understanding – supported by an outstanding, creative curriculum.
- Everyone is a learner – with opportunities for life-long learning. Continuous professional development of staff, rooted in research, is highly valued.

Character

- Our behaviour values form the basis of our approach to promoting positive behaviour and character: ready, respectful, safe and kind.
- As a 'Rights Respecting School' children's rights are learned, understood and lived.
- Children are enthusiastic, happy, engaged, confident, courteous, resilient and interdependent. They are highly motivated to do their best and to be their best.
- Children learn to make good choices and to take responsibility for their actions. They are responsible citizens.
- Children feel safe, and know how to keep themselves safe.

Community

- Each child is significant; known, valued, respected and cherished.
- At the heart of our work is the belief that parents are key partners in their children's education.
- The school is at the heart of the wider community, served by the community, and serving the community.
- Diversity is an integral part of our culture, and identity. The school is a fully inclusive, diverse community welcoming and celebrating all sections of the wider community. Equality is important to us.
- All members of the school community are responsible citizens of their local, national and global communities.
- Effective partnerships with other community organisations are formed and have a positive impact on the life of the school.
- Clear and effective communication enables every member of the community to be informed and to play their part.

Parent and Teacher Consultations



There is the opportunity this half term to book a ten minute appointment with your child's teacher to discuss how your child has settled into the school year.

The appointments will be available after school during the final week of the half term.

In order to reduce the risk of Covid-19 transmission, these appointments will be held remotely, either through a telephone call or video link (Microsoft Teams). You will be able to choose which suits you best.

You will be able to make an appointment through SchoolPing. Each class teacher will have a schedule of availability and you will be able to book a ten minute slot. We will need to keep strictly to time so that we can fit everyone in.

When you make your appointment we will ask you to let us know, in the comments box, the following information:

1. If you would prefer a video conversation, through Microsoft Teams, or a phone call
2. If you prefer a phone call, which number to contact you on

Family-School Partnership Award

We are taking part in a scheme being run in Ealing, Harrow and Brent which will help us to think about how we work with families and support us to build stronger links between home and school. This very much reflects our belief that parents are our key partners, as expressed in our new Foundation Statement.

We will be looking at lots of different areas including: the school environment; how we communicate and how we help you to support learning at home.

The first step is to gather the views of everyone involved in school life: parents and carers; all staff and Governors.

To help us make decisions about how we work in the future we need the views of as many parents as possible. Please help by taking part in the online survey. The short survey is anonymous and can be done online by following the following link: <https://www.surveymonkey.co.uk/r/Pinnerparkparents>

It is open now and will close on Wednesday 21st October.

At the end of the survey there are some questions which relate directly to the COVID-19 lockdown and partial school closures. When answering all other questions, please think about how things are in more 'normal' times!

Once we have the results we will let you know the areas we plan to work on – and we will keep you informed of our progress via emails and the school newsletter. If you have any questions please contact us (office@pinnerpark.harrow.sch.uk).



School Lunches – Hot Meals are Coming Back!

We are currently serving packed lunches in school so that we can maintain our class 'bubbles' and deal with the practicalities of managing a meal service across more than twenty different dining locations!

We are working with Chartwells, our catering company, to reintroduce hot meals after half term. These will still be served in classes (for children in Years 1 – 6, and in the hall for Reception children).

The menu, and all the allergen information, are available on the school website:

<https://pinnerpark.harrow.sch.uk/school-meals.html>



Remote Education Plan



Since the start of term, teachers and support staff have been working on a remote education plan that will ensure continuity of education for all pupils. This is a contingency plan which is in place should individual children be required to self-isolate, if a class 'bubble' is required to remain at home, or if there are any further local or national restrictions due to an outbreak of COVID19.

We will continue to use DB Primary as our main learning platform for sharing learning activities. Over time, we will introduce Microsoft Teams as an additional solution.

Each week, the teachers are undertaking additional planning which considers the needs of children who are at home. The activities and resources will be shared through DB Primary. Each year group will have a new 'community' on DB Primary which will be a 'Remote Learning Community'. If your child is unable to attend school because he or she is self-isolating, you will be able to log into this community and access the materials for each day.

If an entire class is required to self-isolate, then the classroom staff will supplement the online materials with more content, including the option of a live class session through Microsoft Teams. Information will be sent to parent should this be required.

The year group 'Remote Learning Communities' will be accessible from Monday to all children in the year group.

There are some step-by-step instruction slides on our website:

<https://pinnerpark.harrow.sch.uk/remote-education-plan.html>

Your child won't need access these pages unless he or she is required to self-isolate. We will contact you in these circumstances and remind you of this information!

School Photographs



We have booked our school photographer to take individual portraits on Tuesday 20 October. Following this, you will receive information about how to order photographs.

Due to the protective measures we have in place to reduce the likelihood of COVID-19 transmission, we won't be able to do sibling photographs this year.

School Admissions

If your child is due to start in Reception in 2021, you can apply now, online at: www.harlow.gov.uk/schooladmissions or www.eadmissions.org.uk. Your child will be starting in Reception if he or she was born between 1st September 2016 and 31st August 2017.

The closing date is 15th January 2021.



Year 6 – Secondary School Admissions



If your child is in Year 6, you can now apply for a secondary school place, online at: www.harlow.gov.uk/schooladmissions or www.eadmissions.org.uk.

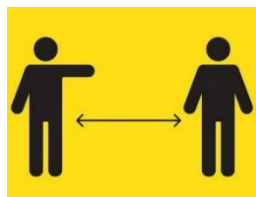
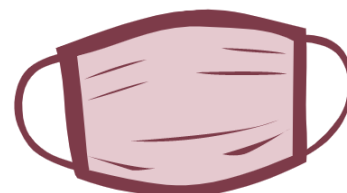
The closing date is 31 October 2020

It is really important that you apply by the closing date. There is further information in the [Harrow Guide to Secondary Schools](#).

If you have any difficulty making your application please do let us know as soon as possible.

Face Coverings and Keeping our Distance!

We are asking that any parents or visitors coming onto the school site wear a face covering. This includes the school's outdoor spaces such as our playgrounds at drop off and collection times. We are mindful that some parents are not able to wear a face covering – for example, those with certain health conditions.



Please remember that all adults in school, including parents, will be expected to observe social distancing at all times.

This means that we want you to remain at least two metres from all those who are not part of your household.

When you are waiting on the playground at drop-off and collection, please try your best to find a nice, big space to stand in. Please 'send' your child to the teacher, and we will 'send' them to you at the end of the day – please don't be tempted to gather around the door. Thank you.

Staff Spotlight – Welfare Team



We have a large staff team, and many of our members of staff work behind the scenes – vital to the school, but often unseen.

This week, we want to highlight the work of the members of staff who work as part of our welfare teams.

The welfare team look after all the children who have medical conditions, ensure that medication is in date, readily available and administered correctly, look after children who are feeling unwell or who have had an accident, communicate with staff and parents, and keep careful records.

Their role has become more complicated this term due to the Covid-19 rules and guidelines. We have adjusted our procedures to ensure that we don't have children from different 'bubbles' congregating in the welfare rooms – this means that our welfare team are often going to the children, rather than the children coming to them!

Thank you to the team for all their hard work!

Earrings

We prefer children not to wear earrings, though we realise that they may need to be worn in recently pierced ears. If this is the case, only a plain stud earring should be worn (no hooped, shaped, gem or 'dangly' earrings please).

All earrings must be removed by your child for PE lessons. We will not allow a child to do PE if they are wearing jewellery of any kind. Therefore, it is much simpler not to wear earrings (especially on PE days).

A few parents have asked if children can cover the earrings with tape for PE lessons. The guidance to Harrow schools states, "It is not considered safe, in any lesson where there may be physical contact, to cover earrings with tape. Therefore children will not be able to participate in PE lessons until earrings can be safely removed."

Please consider removing earrings for the school day, and especially on those days when your child has PE.

Thank you for your support with this.



REMINDER

Friday 23 October is an INSET day

School will be closed to children on this day

What to do if someone in your house has Covid symptoms

If your child develops symptoms of COVID-19, they should remain at home for at least 10 days from the date when their symptoms appeared. Please inform the school immediately.

All other household members who remain well must stay at home and not leave the house for 14 days. The 14-day period starts from the day when the first person in the house became ill. Household members should not go to work, school or public areas and exercise should be taken within the home.

Household members staying at home for 14 days will greatly reduce the overall amount of infection the household could pass on to others in the community.

If anyone in your household has symptoms, please dial 119 or visit <https://www.gov.uk/get-coronavirus-test> to book a test as soon as possible. Once you have a test result (positive or negative), please inform the school and we will be able to advise you on the next steps

The main symptoms of coronavirus (COVID-19) are:

- **a high temperature** – this means you feel hot to touch on your chest or back (you do not need to measure your temperature)
- **a new, continuous cough** – this means coughing a lot for more than an hour, or 3 or more coughing episodes in 24 hours (if you usually have a cough, it may be worse than usual)
- **a loss or change to your sense of smell or taste** – this means you've noticed you cannot smell or taste anything, or things smell or taste different to normal

Most people with coronavirus have at least 1 of these symptoms.

Remember, if you, or any member of your household, has any of the symptoms above you must:

- stay at home (do not leave the house except to get a test)
- arrange to have a test to see if you have COVID-19
- co-operate with NHS test, track and trace
- inform the school straight away

If a child or adult develops any of these symptoms whilst in school they will be immediately isolated and sent home.

Your child does **not need a test** if they have a runny nose, are sneezing or feeling unwell but do not have a temperature, cough or loss of, or change in, sense of smell or taste because these are not normally symptoms of coronavirus.



CORONAVIRUS
STAY ALERT TO
THE SYMPTOMS

FOLLOW US ON SOCIAL MEDIA
@PinnerParkSch



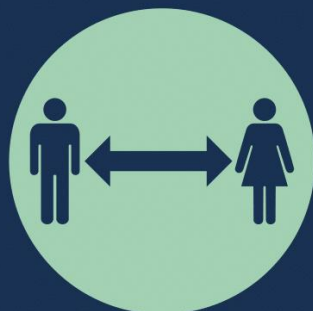
We must keep on protecting each other.



HANDS



FACE



SPACE