

The Pinner Park Post



Learning • Character • Community

Volume 2 | Issue 11 | Friday 20 November 2020

Let There Be Light...

This term is jam-packed with festivals and celebrations of light. We're talking to the children about Diwali, bonfire night, Hanukah, Advent and Christmas. As the very dark nights draw in, we begin to understand the importance of light in our lives.

Light can be a guide, a security and a comfort. We encourage our children to be a 'light' to others through their kindness and thoughtfulness.

Best wishes,

Nick Waldron

Headteacher



Anti-Bullying Week



What is Bullying?
Someone is trying to hurt you
It happens again and again
You can't stop it on your own

This week we have taken part in national Anti-Bullying Week. Every November schools throughout the United Kingdom take part in this special week. This is an opportunity to shine a spotlight on bullying and consider the steps we can take together to stop it. This year the theme for the week is 'United Against Bullying'.

During the week we have shared our understanding of what bullying is (displayed to the left). Please reinforce this message with your children.

There is a pack for parents, written by Kidscape and designed to give you information about bullying, tips about what to do if you're worried about bullying, the tools to help you talk to your children about bullying. [You can download the pack here.](#)

We are also sending a copy of our leaflet alongside this newsletter.

Christmas Card Orders – Deadline Today!

If you returned your child's Christmas card design form by Monday last week, check your email from Xmas4Schools. You can click the link in the email to order cards and gifts featuring your child's design.

Annual Flu Vaccinations – **Have you completed the form yet?**



The immunisation team will be in school on Tuesday 8 December. The flu vaccination is recommended to help protect your child against flu and this year is being offered to all children in primary school (Reception to Year 6). Nursery aged children can have the vaccination through their GP.

[Click here](#) to view a leaflet explaining the vaccination programme – it includes details about the small number of children for whom the nasal vaccine is not appropriate.

This year the consent process is electronic. In order to access the online consent form, please click on the following link <https://clchschoollimmunisations.co.uk/Forms/Flu> You will need to enter the unique code for Pinner Park Primary School. The code is: **CL102207**

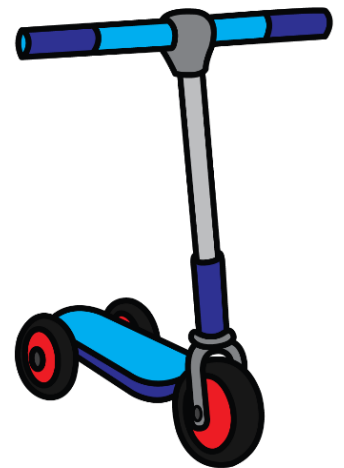
If you decide you do not want to vaccinate your child against flu, please complete the consent form giving the reason. This will save us having to chase you up!

Scooter and Cycle Safety

It's great to see so many children scootering and cycling to school. This is a healthy way to travel to and from school.

We have some simple rules in place to keep everyone safe. Please read these through with your child.

1. We do not allow any cycling or scootering on the school grounds. Please push or carry scooters and cycles on the school playgrounds and pathways
2. Please do not cycle or scooter across the zebra crossing. Always stop, dismount and push across.
3. When scootering or cycling close to school, please slow down – the pathways around school are very busy at drop-off and collection times.



Changeable Weather – Bring a Coat!



You will have noticed that it was much colder this morning, and the weather has been very mixed this week. We will continue to use the outdoor spaces in school as much as possible, but it is really important that each child brings a warm, waterproof coat every day to school.

This week we have found that a few children have not had a coat in school, despite the weather being very unpredictable. Even if the weather is dry and warmer when you leave for school in the morning, please do not assume that it will stay that way!

Celebrating Birthdays



We love celebrating birthdays at Pinner Park. Birthdays are such fun – marking another year that is past, and a reminder that we are ‘growing up’!

Schools have a number of ways of marking children’s birthdays and I know that it is traditional in some schools for children to bring sweets, cakes or party-bags to share with others (though this is no longer the case for most schools).

For a number of reasons, we do not want sweets, cakes or party bags being brought in to school, and we want to relieve parents of that particular pressure when you have lots of other birthday things to think of!

We are very happy for children to wear their birthday badge, and we will, of course, wish a very ‘happy birthday’ on that special occasion. If you would like to mark your child’s birthday in another way, we suggest that you consider donating a book to the school or class library. You can write a message in the book to mark the special event.

Diary Date – End of term

The last day of this term is Friday 18 December. In ‘normal’ times we would usually finish the school day a little earlier at the end of term. However, in order to maintain our staggered timings, school will close at the same time as usual on this day. Thanks for your continued support with our staggered start and finish times.



Fitbits and Smart Watches



We know that ‘Fitbits’ and other smart watches are quite the thing in modern Britain! These devices are wonderful, and can be great fun, but they are not suitable for school wear. The devices are often very expensive and some can connect to the internet.

We are very happy for children to wear an inexpensive, plain watch (analogue or digital) but we will ask them to keep their Fitbit or smart watch for home use only.

Parent Information Point

As you know, our office is currently closed to visitors at the beginning and end of the school day. It is open at other times for essential use only.

At the start and end of the school day we have our outdoor parent information point – this is our outdoor office! It is located in the upper school playground. Please do come to the information point if you have any questions or if you need to pass a message to any member of staff.



Face Coverings

It is our expectation that any parents or visitors coming onto the school site wear a face covering. This includes the school's outdoor spaces such as our playgrounds at drop off and collection times.

We are mindful that some parents are not able to wear a face covering – for example, those with certain health conditions.

Thank you for your support with this.



Keeping in touch with the PTA and other parents



Thank you to everyone who has signed up to use Classlist. This is the parent-to-parent communication tool which is also used by our PTA – it has replaced the WhatsApp lists previously used.

To join Classlist, please use the information in the emails we have sent from Classlist – the link in the email enables you to join as a 'pre-approved' parent. If you didn't receive the email, you are welcome to use the following link:

<https://classlist.page.link/abfmXP9VbndyLcWM9>

All About Reading and Phonics – Reception and Year 1

Thanks to all the Reception parents who were able to join us for our presentation yesterday. We hope you found it useful. We will send the presentation slides and an information pack to all Reception parents today.

We have our presentation for Year 1 parents coming up soon. This will be an opportunity to focus on phonics and reading. You will hear all about how we teach reading and phonics in Year 1.



Due to the Covid-19 restrictions, the event will be online, through Microsoft Teams. The presentation takes place on Thursday 3 December at 6pm.

Learn all about phonemes, graphemes, blending and segmenting, sound buttons, reading levels, phonics games, reading schemes, real books and tricky words... in a fun, relaxed environment!

These briefings are for parents – children do not need to attend.

We will send the link to the meeting and a guide to Microsoft Teams through School Ping.

Using DB Primary – Finding Homework Tasks



DB Primary is a cloud-based platform, which gives schools a safe and secure environment for staff and pupils to collaborate.

Because DB Primary is all web-based, children can access DB Primary anywhere with just a web browser and internet connection – there is nothing else they need to install on their computer.

Each child has an account for DB Primary – please let us know if you are not sure of your child's log-in details.

Each child will be a member of one or more 'communities'. There may be a class community, a year community, or some special interest communities (for example, 'Healthy Heroes'). We have also set up a Remote Learning community for each year group for children to access if they are required to self-isolate.

You can access all the communities your child is registered for by clicking on the 'communities' tab at the bottom left of the DB Primary home page (as indicated by the red arrow in the screenshot below).

If your child has weekly homework, you can find information about the tasks on DB Primary.

