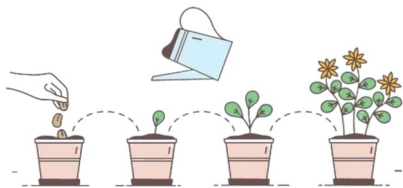


Vocabulary

Word	Meaning
bark	The rough outside part of a tree trunk.
deciduous	Deciduous trees lose all of their leaves in autumn and grow new leaves in spring. Oak and chestnut trees are deciduous.
evergreen	Evergreen trees do not lose their leaves. They stay green all year. Pine trees are evergreen.
plant	A plant is a living thing that grows in the soil. It turns light from the sun into food.
seasons	There are 4 seasons in the UK – spring, summer, autumn and winter.



What do plants need to grow?



Plants need water, sunlight and nutrients from the soil to grow. They also need the right temperature.

Why do we need plants?

Plants are really important for the planet and for all living things.



Plants help to clean the air and make oxygen, which humans and other animals need to breathe.

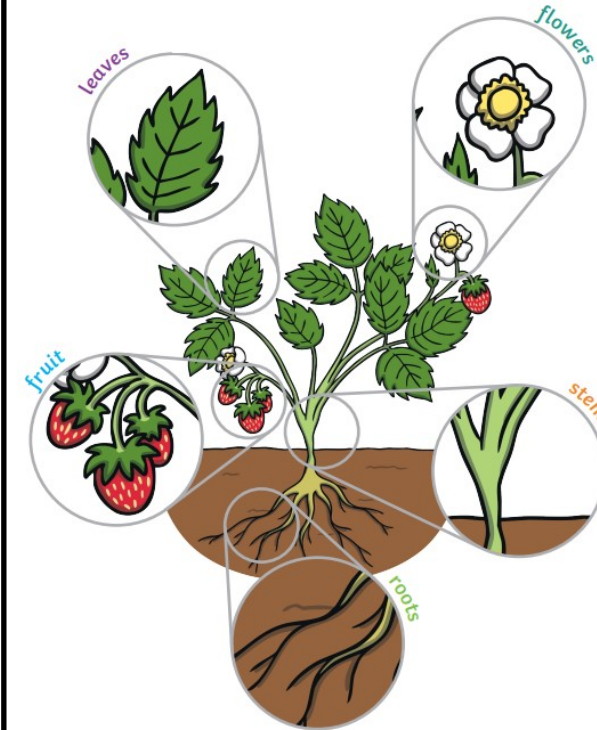


Living things need plants to live - they eat them and live in them.



Plants help to clean water too.

Parts of a plant



New plants grow from seeds or from bulbs.



Wild Plants and Flowers



dandelion



daisy



buttercup



nettles



ivy



dog rose



clover



brambles

Garden Plants and Flowers



fuchsia



pansy



sweet pea



sunflower



rose

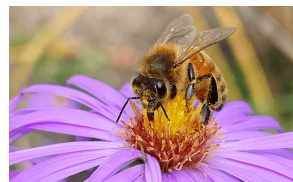


lavender



iris

Growing plants and flowers in the wild or in our gardens is really important for bees and other insects who get their food from the flowers.



Science

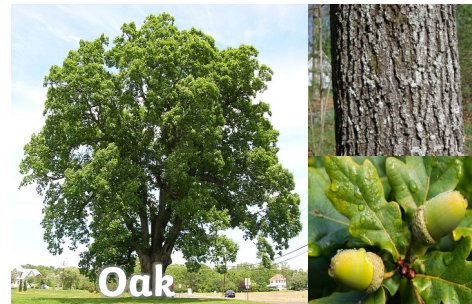
Types of Tree



Birch



Chestnut



Oak



Willow

Extending your learning

Things you could do at home to extend your learning:

1. Visit Kew Gardens in London to see lots of examples of wild flowers and exotic flowers.
2. Plant some flowers in your garden or in a window box to attract bees.
3. Carry out a survey of all the wild flowers you can spot on a walk in the local area.
4. Draw or paint some of the flowers and plants you see on your walk or in your garden.

Year 1 Summer Term